

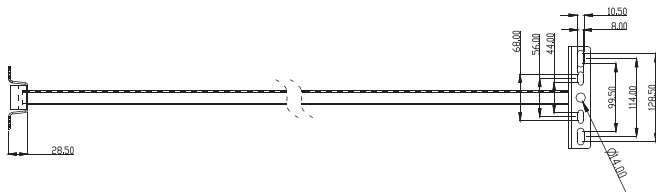
Ausleger-Arm für Strahler Wandmontage

Schild-, Werbetafel- oder Fassadenbeleuchtung

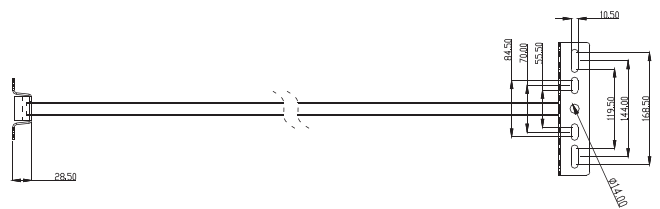
ID:B 1: Strahler 10W / 20W / 30W / 50W
ID:B 2: Strahler 80W / 100W / 120W / 150W / 200W



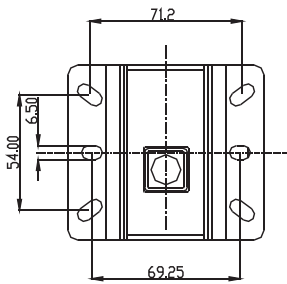
1. Installation Dimensions (Unit: mm)



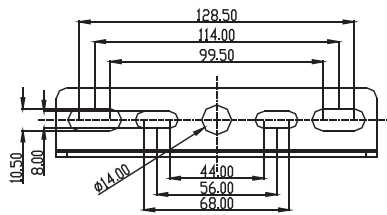
SPA-22120-22-B1



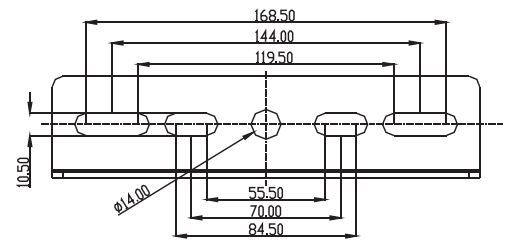
SPA-22123-25-B2



Base



SPA-22120-22-B1



SPA-22123-25-B2

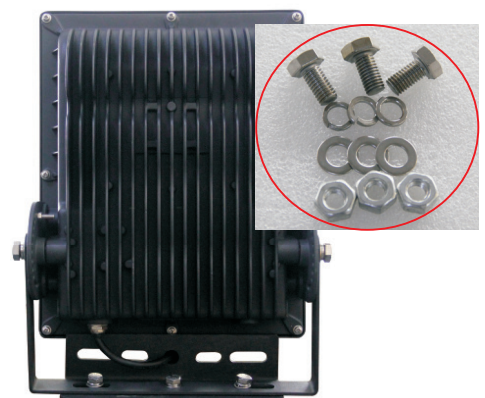
2. Installation and use



Wall Mounting



Steel Plate Mounting



Wall Mounting: At the setting area, bore a hole according to Base Drawing with a 6mm diameter drill, and put Anchor Bolt of M6 in the hole of the wall, and then fix the arm with screw nut.

Steel Plate Mounting: At the setting area, bore a hole according to Base Drawing with a 6mm diameter drill, and put Anchor Bolt of M6 in the hole of the steel plate, and then fix the arm with screw nut.

Remark: 10w matches M6 anchor bolt, 20w-50w match M8, and 70w-200w match M10.

